

TVB - A

5/1.2/M/1

VAV TERMINAL BOXES

- Plug and play
- Available with or without controls
- Pre tested and factory calibrated
- Coils and fans available on request



PRODUCT DATA SHEET



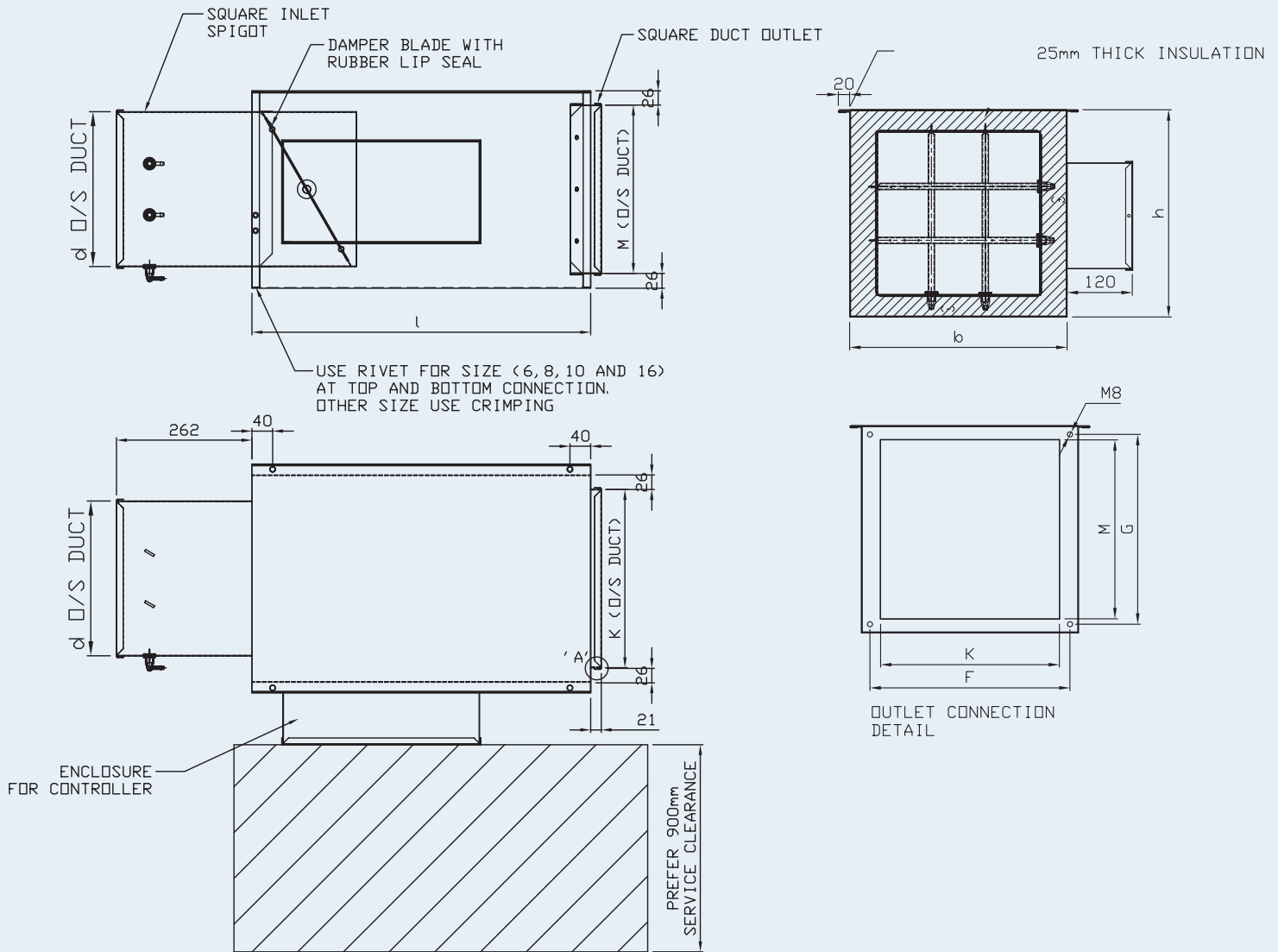
BUSINESS PARTNER OF

Bradflo TROX[®] TECHNIK

TVB - A

GA DRAWING

00 10 20 30 40 50 60 70 80 90 | DRAWING SCALE (mm)



Note:

- 1. $b = K + 26 + 26$
- 2. $h = M + 26 + 26$

Table 1: Dimensions in mm

SIZE	d	b	h	l	F	G	K	M	N
4	99x99	300	203	400	268	171	248	151	148
5	124x124	300	203	400	268	171	248	151	155
6	149x149	300	203	400	268	171	248	151	164
7	174x174	300	254	400	268	222	248	202	171
8	199x199	300	254	400	268	222	248	202	177
10	249x249	355	311	400	323	279	303	259	217
12	299x299	400	381	655	368	349	348	329	262
14	349x349	500	450	655	468	418	448	398	317
16	399x399	600	450	765	568	418	548	398	361

Table 2: Weight in kg approx

SIZE	TVB-A
4	6
5	6
6	6
7	7
8	7
10	9
12	15
14	19
16	23

TVB - A

SPECIFICATIONS

Construction dimensions

Design features casing

- Circular or square spigot connection on high pressure side
- Low pressure side suitable for slide-on flange or angle flange connection
- Holes in the edge of the casing for support rods.
- Volume flow set and airflow tests conducted on each box at the factory

Design features - volume flow control

- Either pneumatic, electronic or DDC

Function description

The terminal box consists of a housing with a circular/square connection on the high pressure side and a rectangle or circular connection on the low pressure side. In the inlet spigot is a differential multipoint pressure sensor, and a motorised control damper. To reduce flow noise, the inside of the terminal box is lined with sound absorbing and heat-insulating material.

* The controller/transducer and actuator are attached to the outside of the casing and factory wired, calibrated and tested.* Additional charges apply

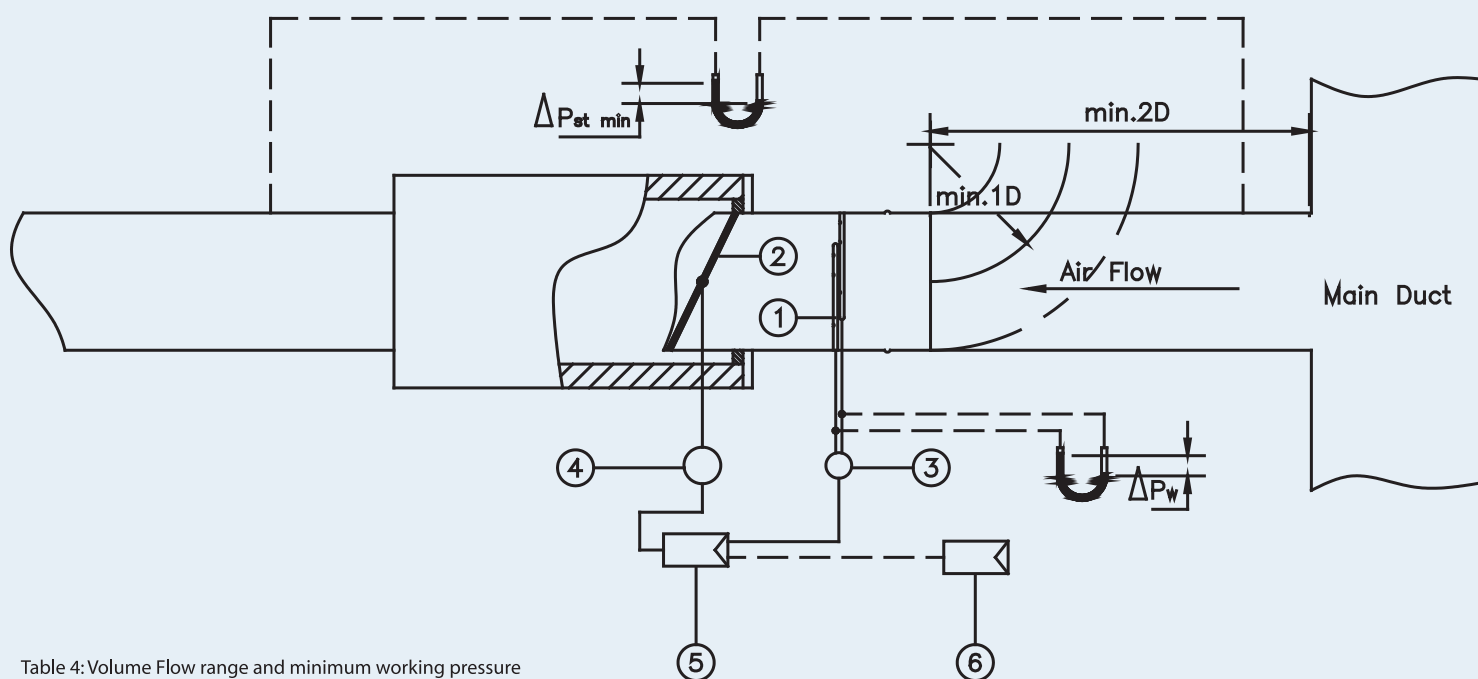


Table 4: Volume Flow range and minimum working pressure

Size	I/s	CFM	TVB-A	Size	I/s	CFM	TVB-A
4	10	21	20	10	65	138	20
	45	95	20		300	636	20
	70	148	40		470	996	20
	100	212	75		640	1356	20
5	20	42	20	12	100	212	20
	80	170	20		450	954	20
	125	265	20		700	1483	20
	165	350	30		1000	2119	20
6	25	53	20	14	150	318	20
	100	212	20		700	1483	20
	155	328	20		1100	2331	20
	215	456	20		1500	3178	20
7	30	64	20	16	190	403	20
	140	297	20		880	1865	20
	220	466	20		1380	2924	20
	300	636	20		1890	4005	20
8	40	85	20	Volume Flow range and minimum working pressure			
	175	371	20				
	275	583	20				
	380	805	20				

- ① Differential pressure sensor
 - ② Control damper
 - ③ Transducer
 - ④ Damper actuator
 - ⑤ Volume flow controller
 - ⑥ Room temperature controller
- Wiring or piping by others

contact

Head Office

Bradflo Pty Ltd
20 Garland Avenue North Albury NSW 2640
T (02) 6058 6900 F (02) 6058 6928
E: enquiries@bradflo.com

BRISBANE

5/41 Lysaght Street, Acacia Ridge 4110
T (07) 3216 9611 F (07) 3216 9477
E: brisbane.sales@bradflo.com

CANBERRA

Unit 3.1, 5 Dairy Road, Fyshwick ACT 2609
T (02) 6239 3400 F (02) 6239 3404
E: canberra.sales@bradflo.com

MELBOURNE

7 Rushdale Street, Knoxfield Vic 3174
T (03) 9764 9656 F (03) 9764 9661
E: melbourne.sales@bradflo.com

RIVERINA

920 Metry Street, Albury NSW 2640
T (02) 6040 6034 F (02) 6040 6035
E: riverina.sales@bradflo.com

SYDNEY

5-7 Salisbury Street, Silverwater NSW 2128
T (02) 9735 7000 F (02) 9735 7011
E: sydney.sales@bradflo.com